

PWFB 1116

1945

CORNER RECORD

Agency Index _____

Document Number _____

City of CULVER CITYCounty of LOS ANGELES, CaliforniaBrief Legal Description MONUMENT PRESERVATION AT OVERLAND AVENUE AND VIRGINIA AVENUE

CORNER TYPE

COORDINATES (Optional)

N. _____ E. _____

Elevation _____

Units ☐ Metric ☐ U.S. Survey Foot

Horizontal Datum _____

Zone _____ Epoch Date _____

Vertical Datum _____

☐ Complies with Public Resources Code §§8801-8819☐ Complies with Public Resources Code §§8890-8902☐ Government Corner☒ Control☐ Meander☐ Property☐ Rancho☐ OtherDate of Survey 1/18/1923-3152
61278PLS Act Ref: ☐ 8765 (d)☒ 8771☐ 8773☐ Other:Corner/ ☒ Left as found☐ Established☐ Rebuilt☒ Pre-ConstructionMonument: ☐ Found and tagged☒ Reestablished☒ Referenced☒ Post-Construction

Narrative of corner identified and monument as found, set, reset, replaced, or removed:

☒ See sheet #2 for description (s):

SURVEYOR'S STATEMENT

This Corner Record was prepared by me or under my direction in conformance with

the Professional Land Surveyors' Act on 3/2, 2021.Signed Eric W. Metz P.L.S. or R.C.E. No. L.S. 9198

COUNTY SURVEYOR'S STATEMENT

This Corner Record was received 10-9-2023,and examined and filed OCT 03 2024.Signed J. Roepel P.L.S. or R.C.E. No. 7289Title DEPUTY COUNTY SURVEYOR

County Surveyor's Comment _____

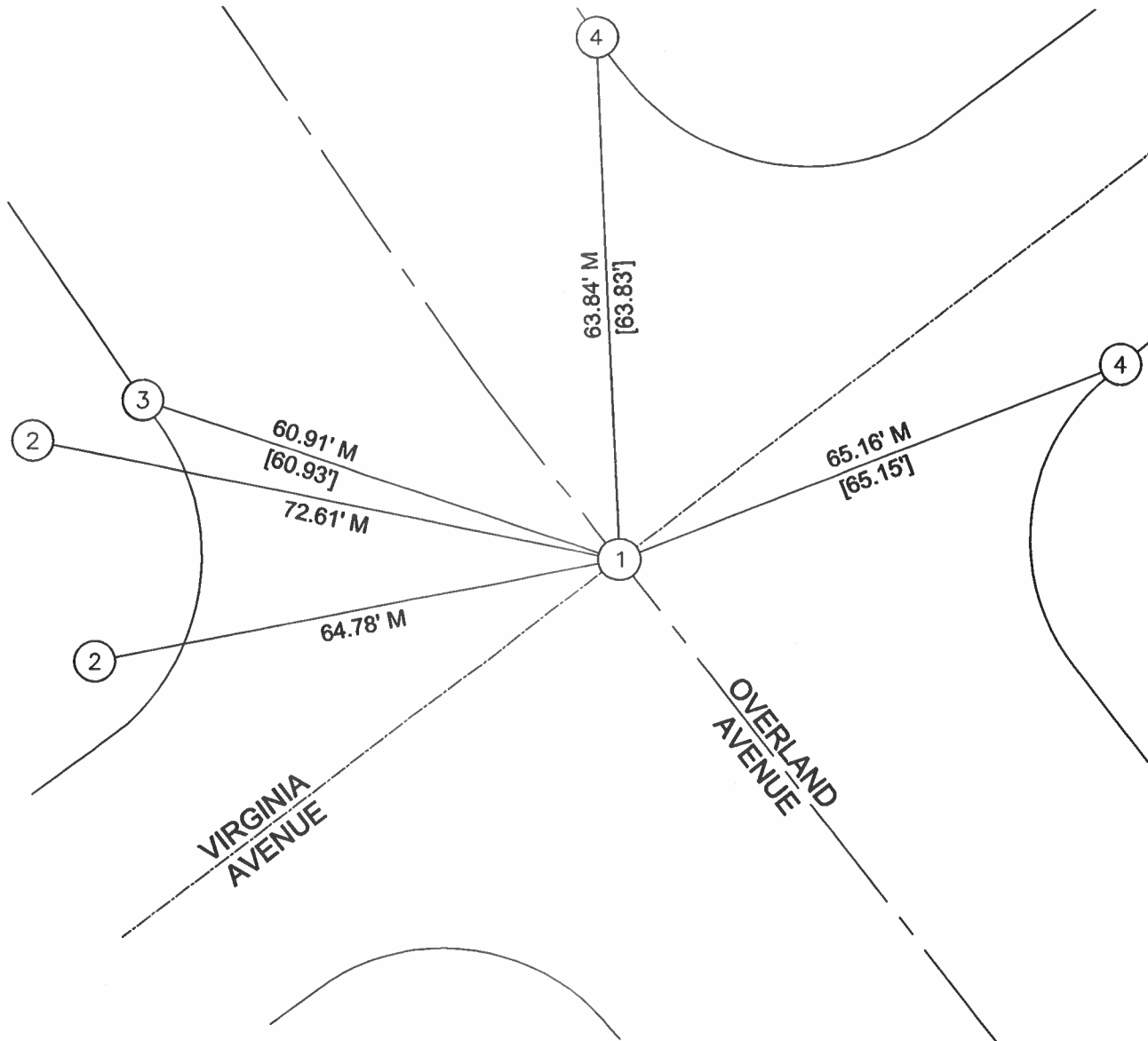


REFERENCES

R-1 = COUNTY OF LOS ANGELES CORNER RECORD 1116/683-684

[] = RECORD DISTANCE PER R-1

M = MEASURED DISTANCE

**MONUMENT NOTES**

- ① FOUND SPIKE & WASHER STAMPED LS 6810, GPS CONTROL POINT 128 PER R-1, SET SPIKE & WASHER STAMPED LS 9198 AFTER CONSTRUCTION
- ② FOUND LEAD, TACK & TAG STAMPED LS 3594 IN B.W., FLUSH NO REF.
- ③ FOUND SPIKE W/ PUNCH MARK IN T.C. FLUSH, PER R-1
- ④ FOUND LEAD & TACK IN T.C. FLUSH, PER R-1



NTS

THE PURPOSE OF THIS RECORD IS TO DOCUMENT THE PERPETUATION OF FOUND MONUMENT(S) PURSUANT TO THE PLS ACT SECTION 8771.
17-VSI-446